

1. Install the rack fixing block so that it has a slight gap with the machine. The extra side of the rack fixing block faces the machine's material-collecting side.

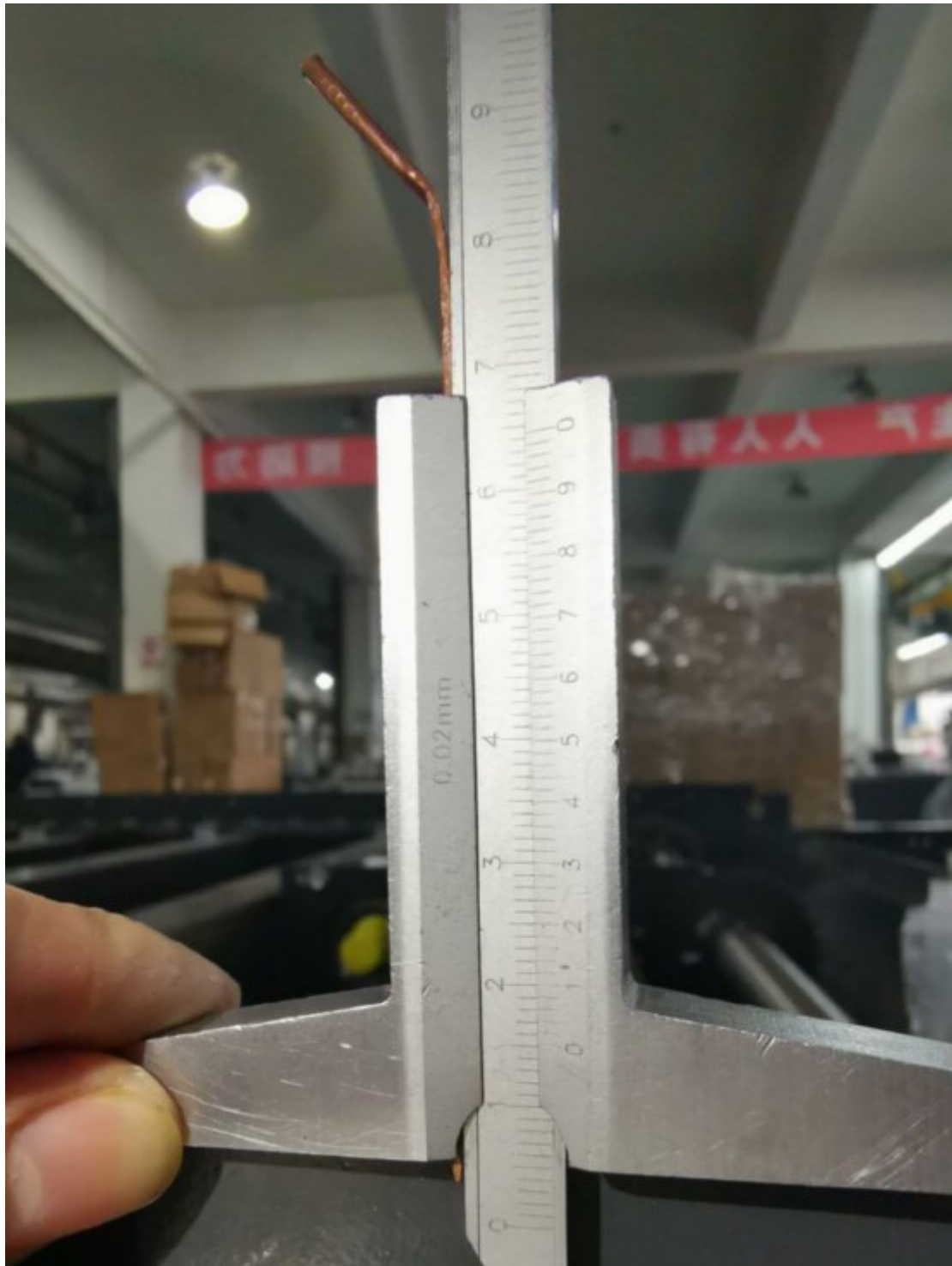


2. Install the height adjustment block from the second mounting hole (the baffle slope).



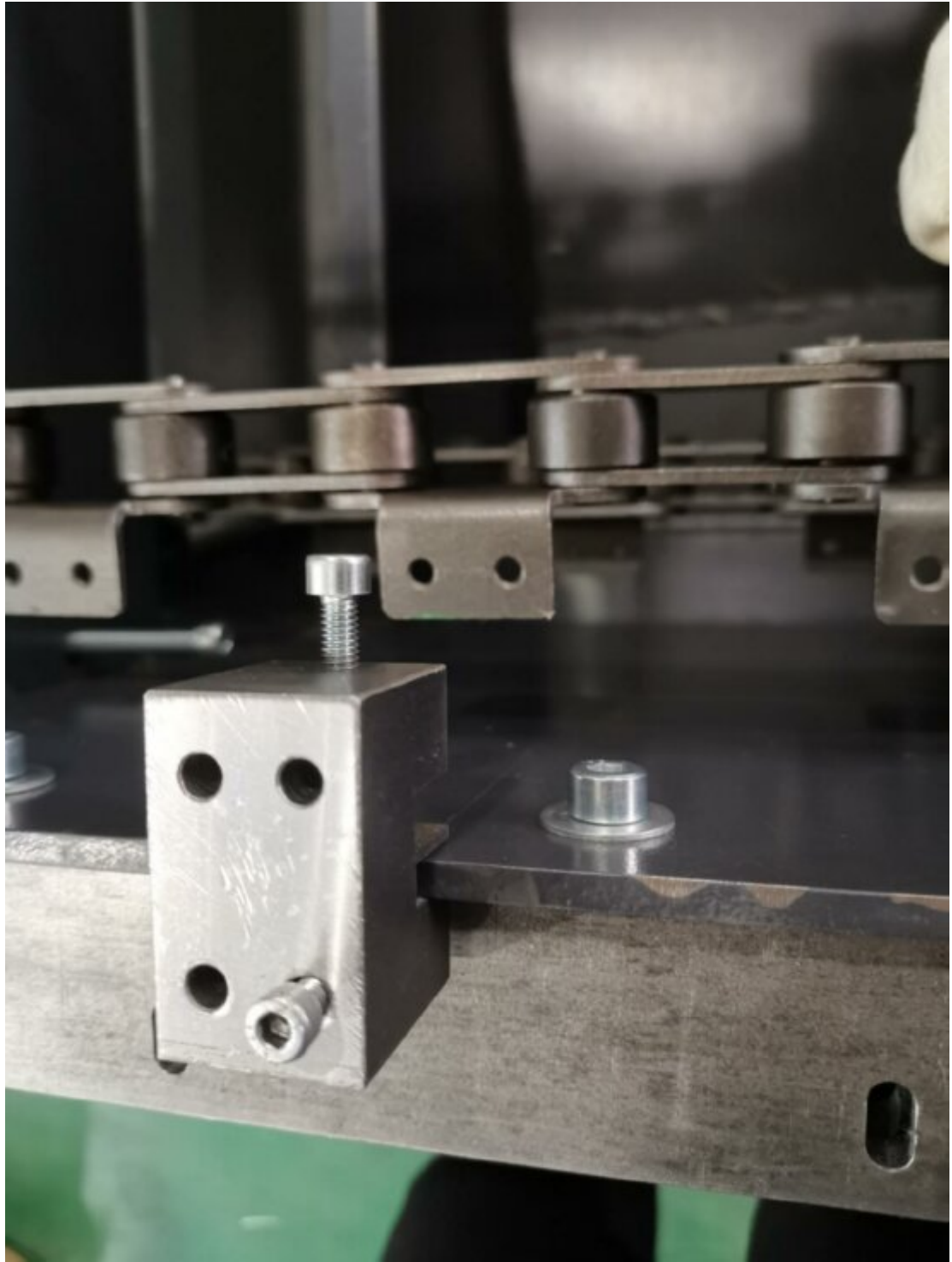


2. Adjust the height to 15mm, the figure below shows that the value is higher than 15mm, you need to tighten the bolt on the height adjustment block to adjust.



3. If the value is less than 15mm, you need another installation method as shown in the figure below (note that the side bolts must be tightened to fix the installation block first). Also tighten the bolts on the mounting block to adjust the height. The rack mounting blocks on both sides need to be adjusted like this before installing the machine beam.





The installation of rack and rail.

For the GLS2520, when you are facing the machine and your left hand side is the receiving table, the rack on that side is fixed and adjusted first, and the other side only needs to bring screws.

First adjust the two ends of the rack to be 2cm away from the baffle



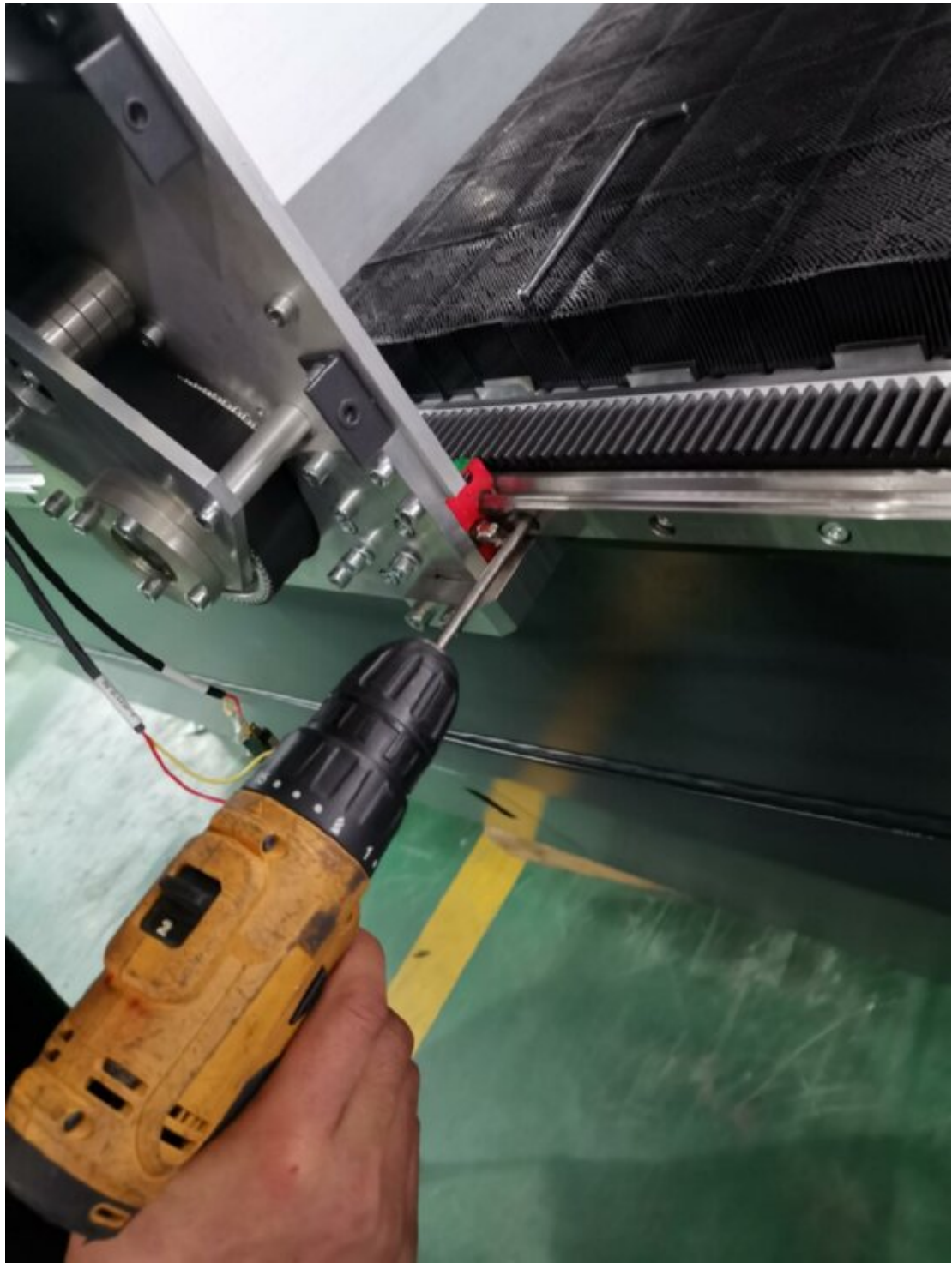
2. Install screws on the slopes of the baffles on both sides and tie a string. Insert a piece of folded paper at both ends of the line to adjust the distance between the line and the rack so that it is equal everywhere. Note that when adjusting the seam of the rack, take another third rack to reverse the buckle to make the rack mesh and hit hard a few times. The lateral transition at the joint of the other two racks requires no obvious steps. Then tighten the screws one by one, and measure the distance between the line and the rack while tightening





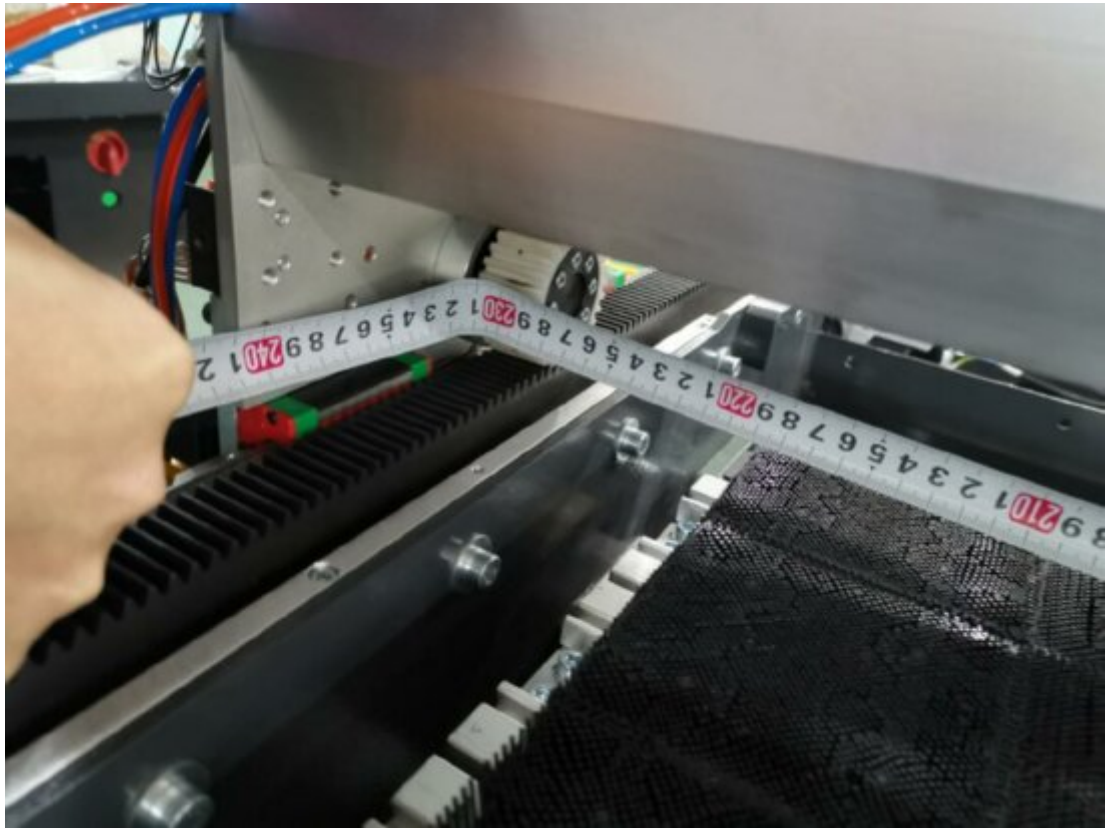
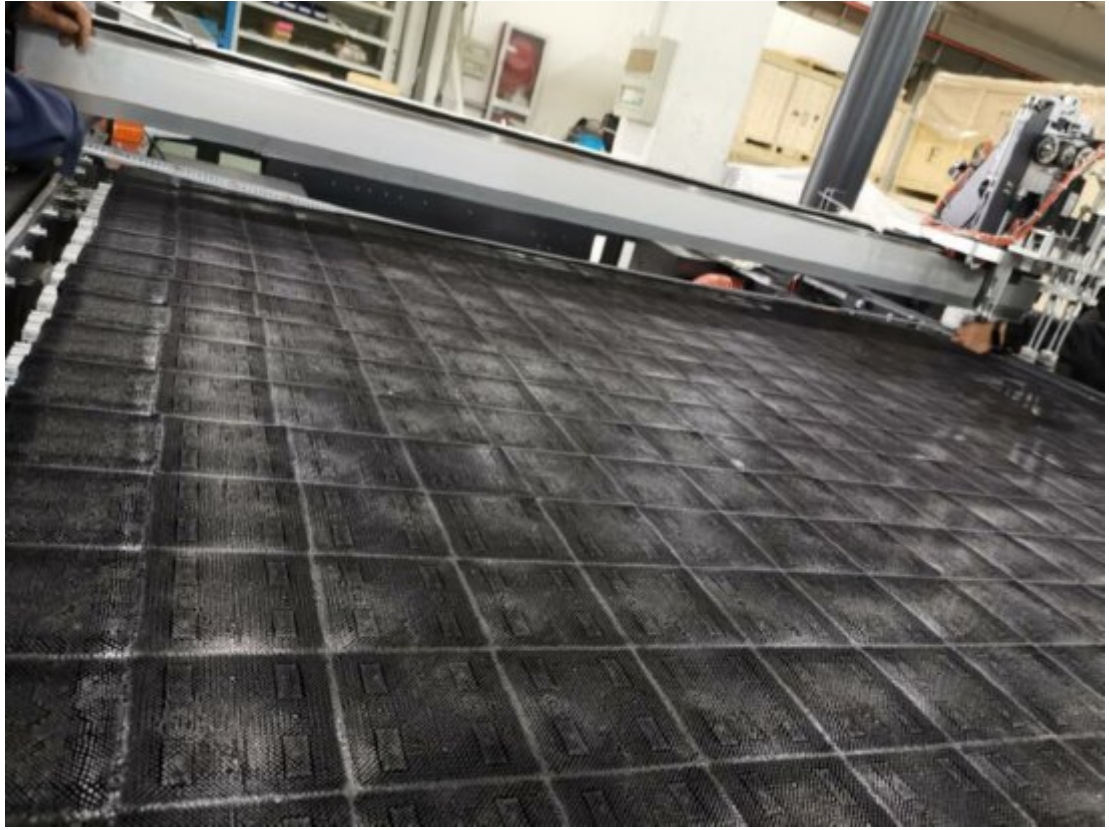
3. Guide rails are installed on both sides of the machine. After mounting the beam, two people push the beam while locking the guide rail screws.





4. Measure the inner distance of the rack with a tape measure to ensure that the distance is 285cm







You can also use a telescopic pole to ensure a distance of 285cm

