

Gantry slowly move back or hit the edge

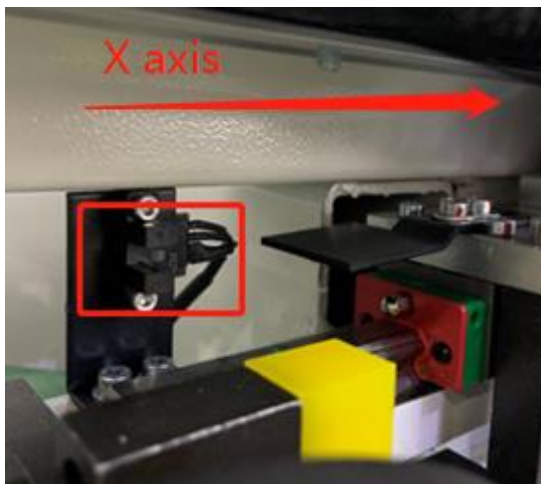
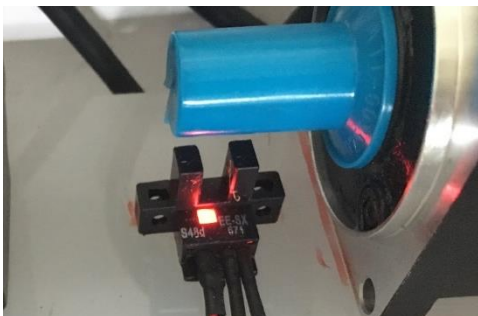
Fault description:

The gantry slowly moves to backside or hit the edge when machine is turn on, can't finish reset.

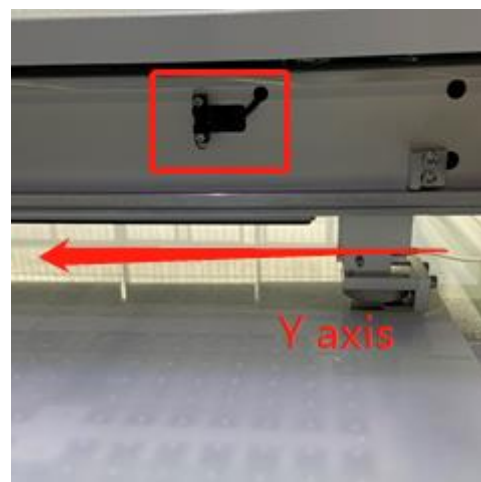
Solution:

1. Check the X, Y original sensor. When the machine turned on, there is a red light on the sensor. When something sheltered the sensor, light off.

Try use air or brush clean the sensor.

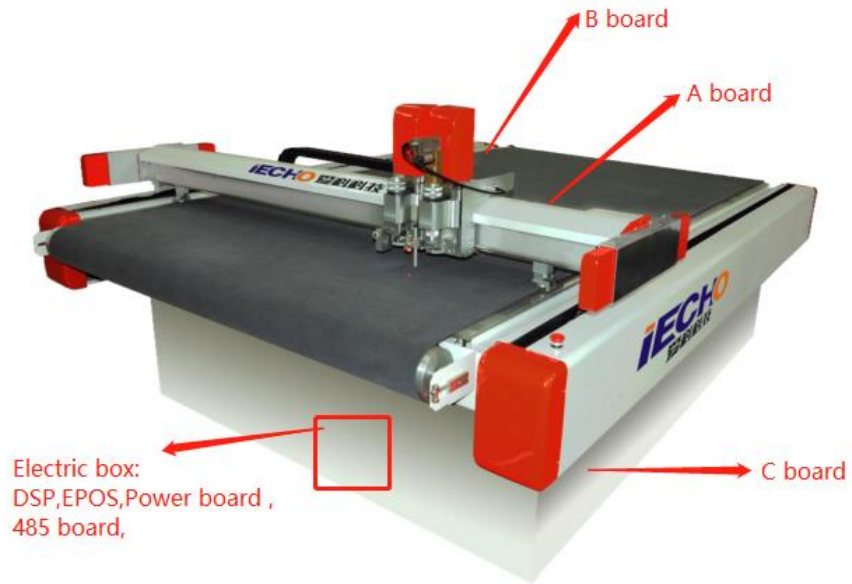


BKL X axis original point sensor



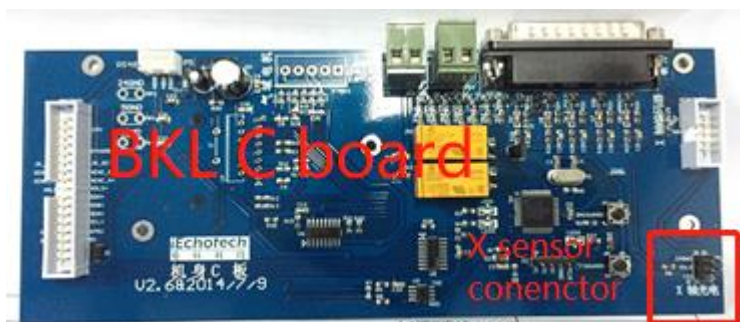
Y axis original point sensor

2. Check the cable of the sensor. (From sensor to circuit board)



X sensor:

X sensor connect on C board then go to connect with power board.

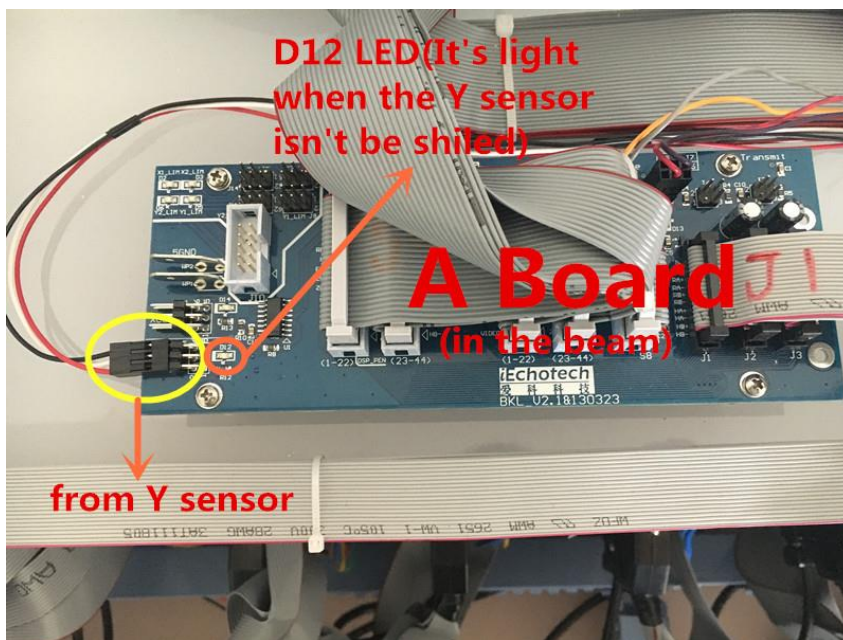


When the X sensor is sheltered, on the power board D5 LED will be light

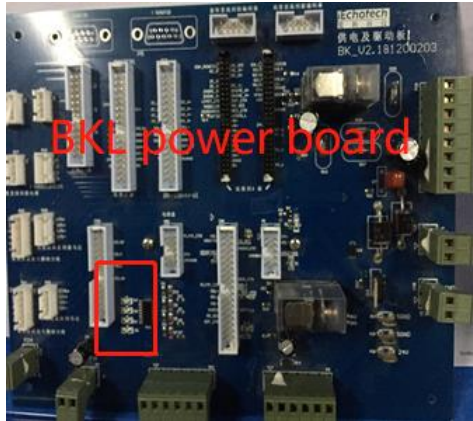


Y sensor:

Y sensor connect on A board then go to connect with power board



When the Y sensor is sheltered, on the power board D3 LED will be light



3.If check all cables and sensor are good, still no signal, change the circuit board.