

The function of Static table AB area

REQUIREMENT:

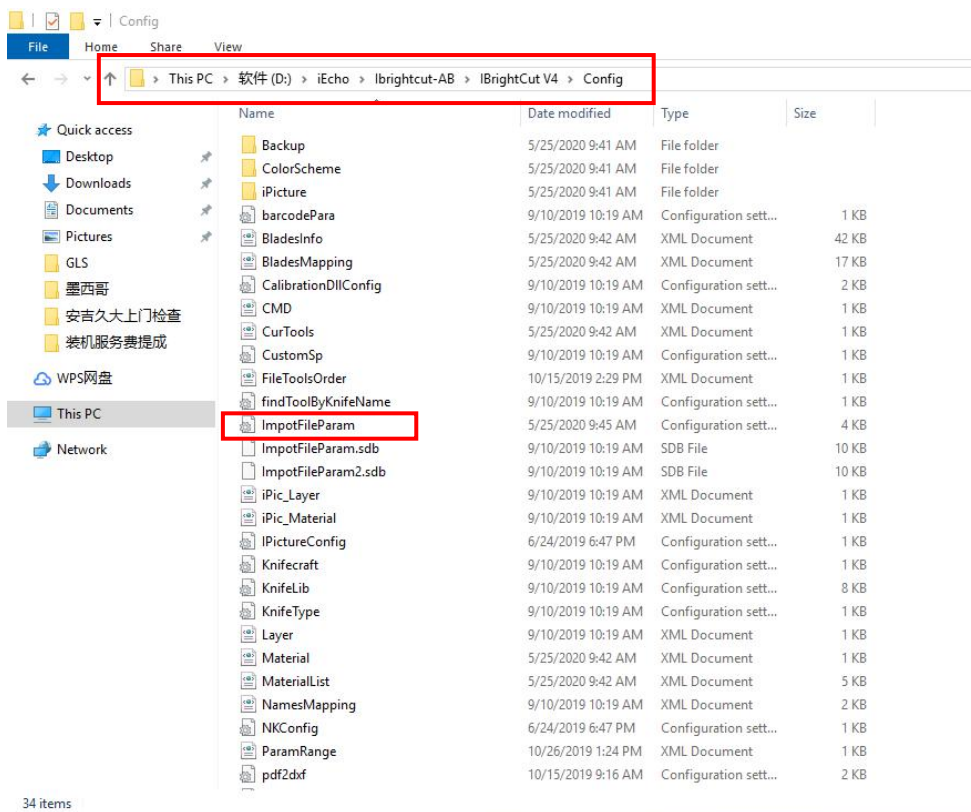
IBrightcut: V4(2010.4.10.2384)

CutterServer: V4 Above

DSP: 2.2.8 Above

1. IF dsp board is old ,when you finished installing IBrightcut ,you need change this parameter.

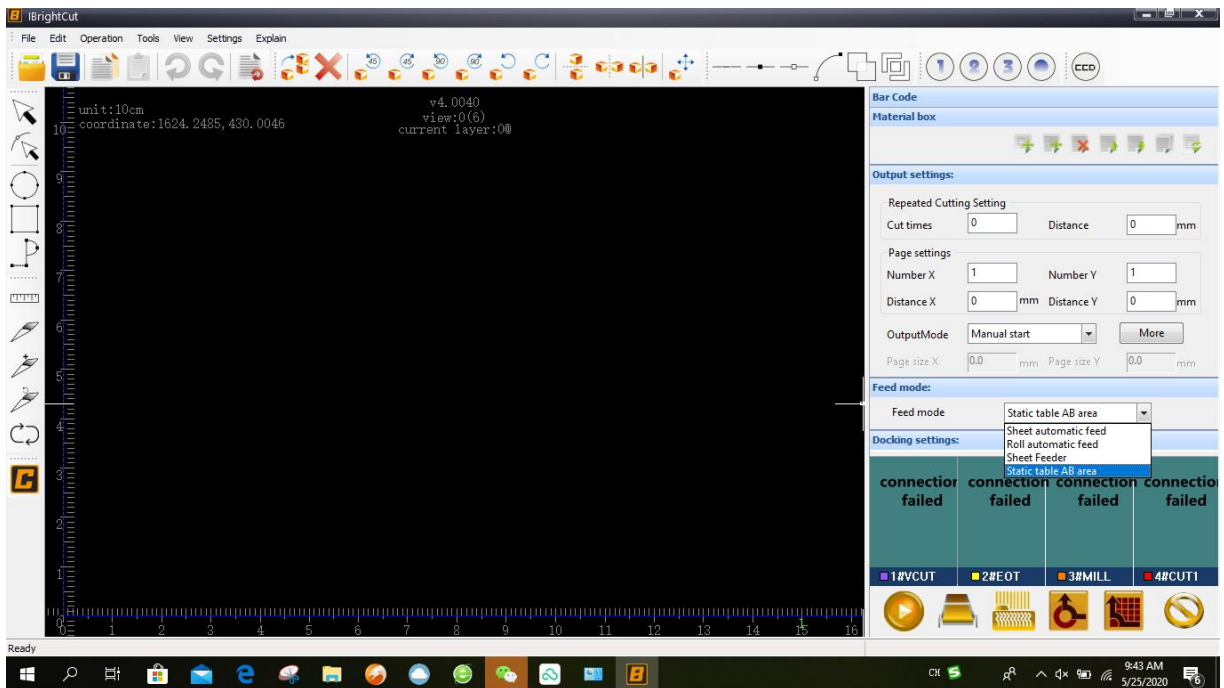
- Open IBrightcut folder,then choose Config
- Open ImportFileparameter
- Find EnableCamerapos ,then change to 0.



```

ImpotFileParam - Notepad
File Edit Format View Help
2=MILL
[Feed]
Delay=20000
[SkyEye]
Enable=0
BarCodeDir=0
WorkMode=0
FeedLength=1000.000000
FilePath=D:\jEcho\
RangeX=1500
AutoPump=1
Delay=500
AutoGas=0
Subfolders=0
[HardWare]
Machine=-1
RangingSensor=0
EnableCameraPos=0
[SmartCamera]
Type=1
    
```

1. Open IBrightcut, choose “static table AB area “in Feed mode.



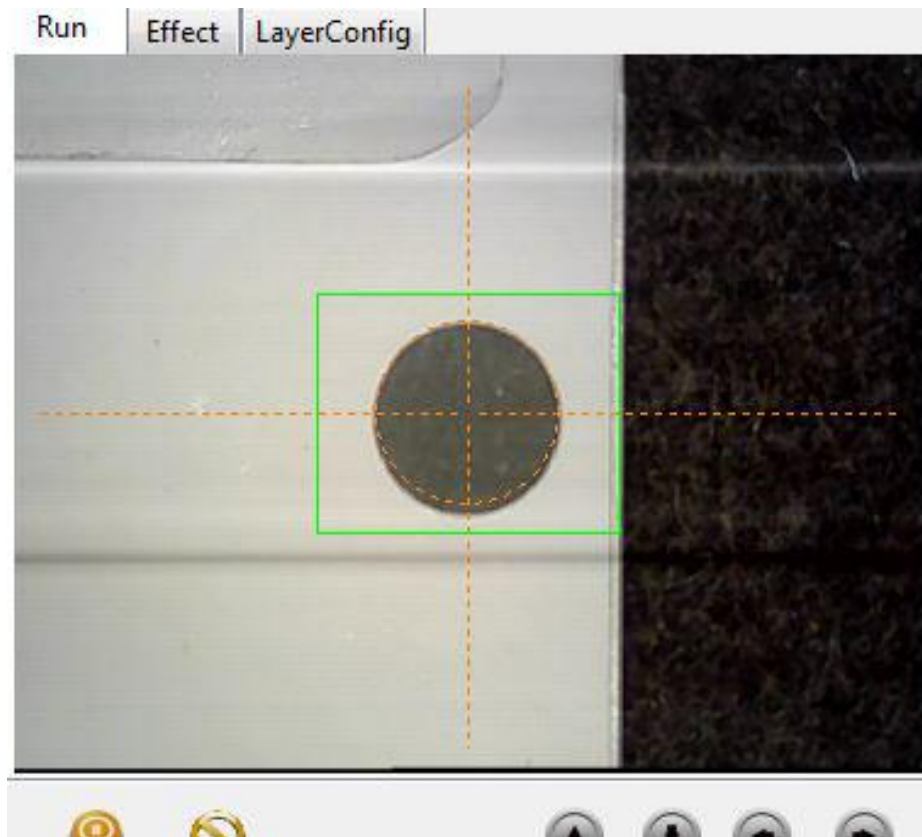
2. When you use this function the firstly ,you need set A and B position.

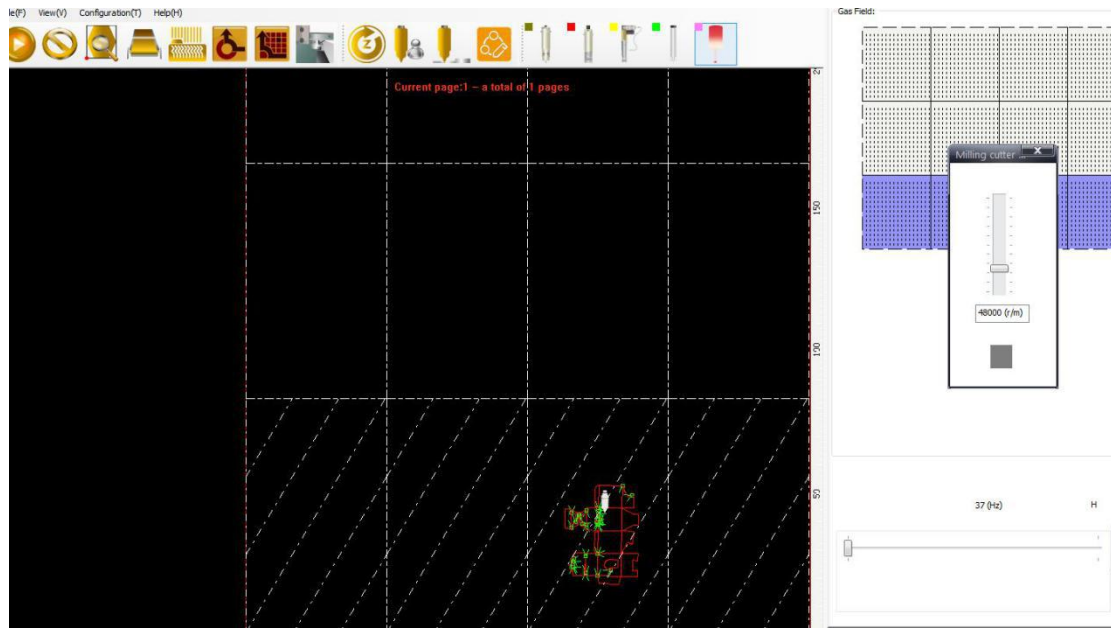
1) .put material on right position,then mark on these two position.



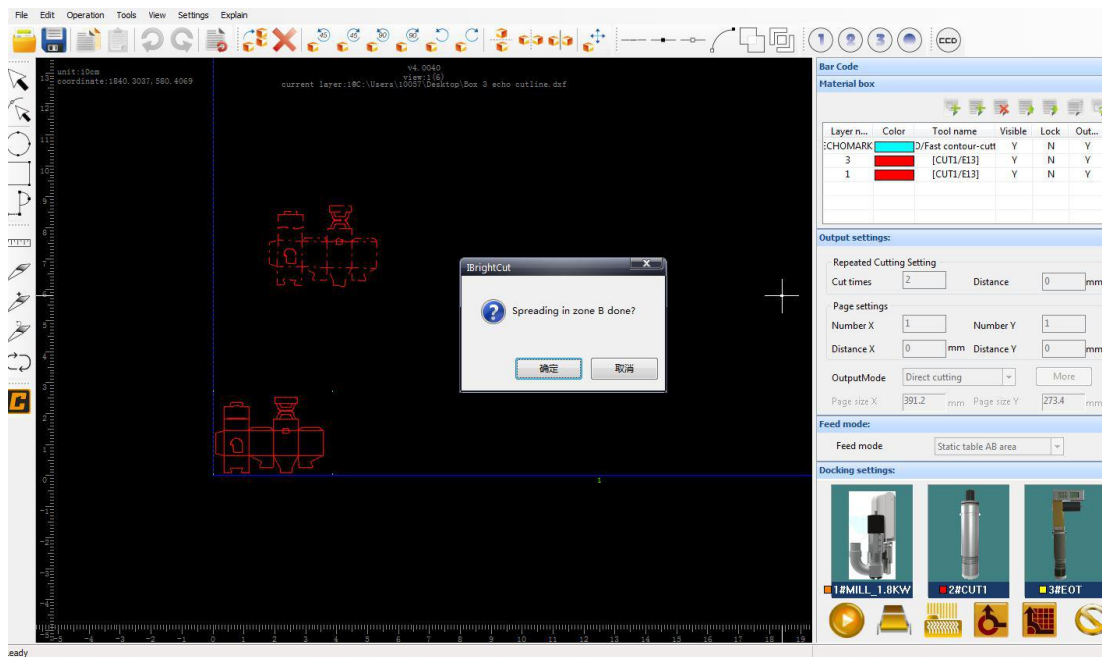
Marked like this.

2) Import cutting file ,then find A material marks to cut by CCD.



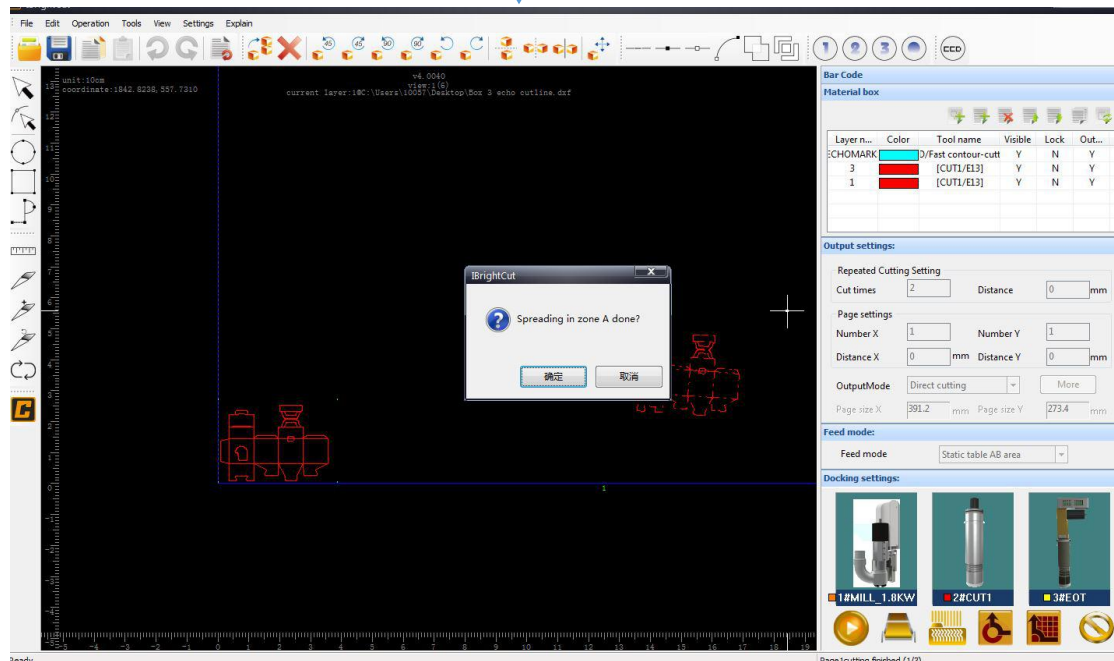


When machine is cutting , 3Brightcut will show this window to remind you put material on B.



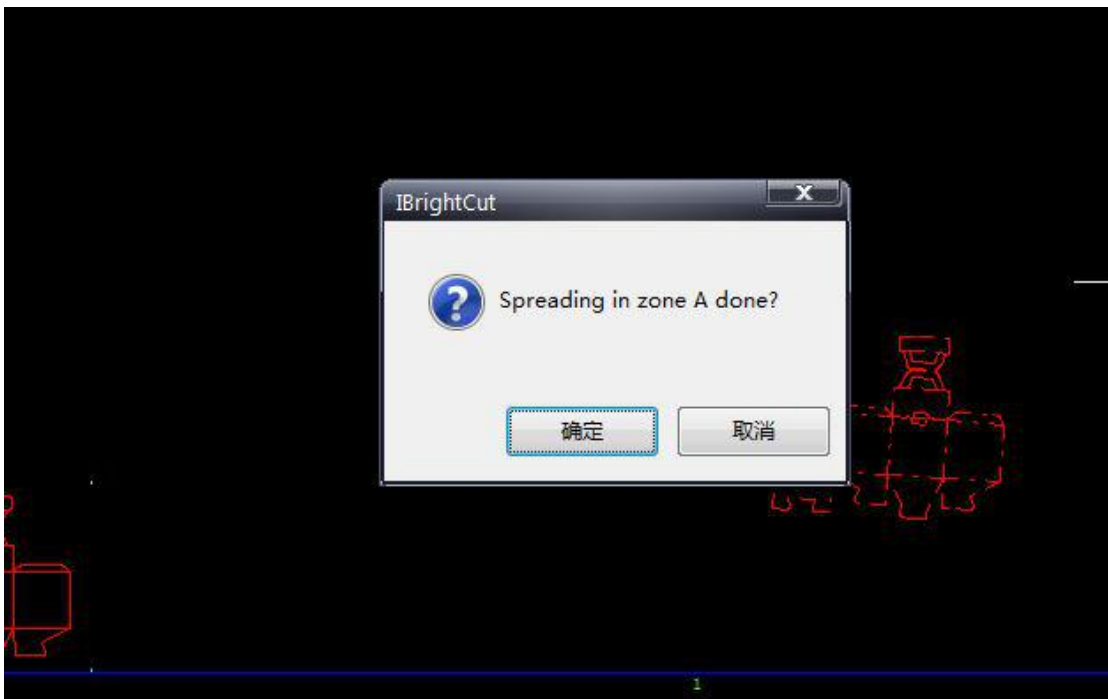
Click sure,when finished cutting, you need move ccd camera to B

material, then you use same way to cut.



When A and B material are finished to cut, position will be set. Next you just set cutting times, then use this function.

4.Matters need attention.



NOTICE:When machine is working on A or B , you can push “Enter” on keyboard if material has been put away, no need click this window.