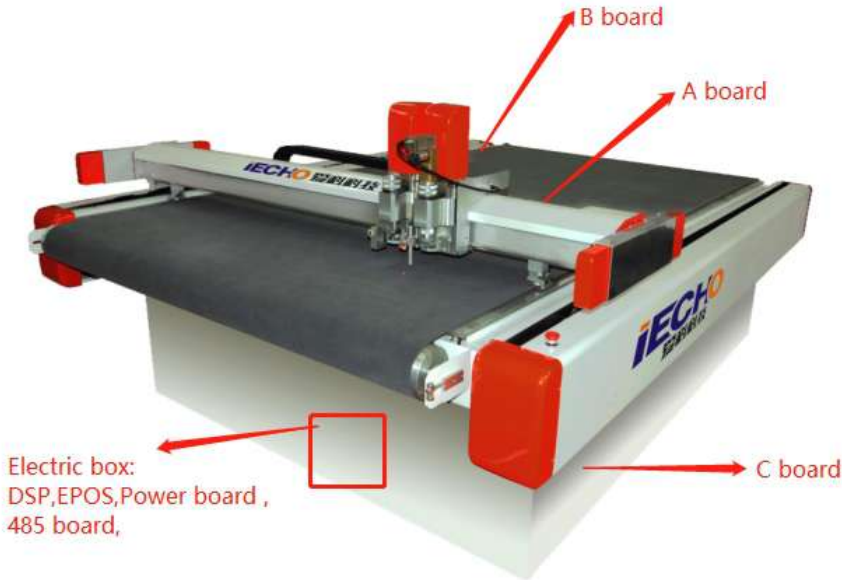


Circuit board function introduction

BKL:



A board:



Y axis original point sensor

Electromagnetic valve for press material

Barrier alarm

B board:

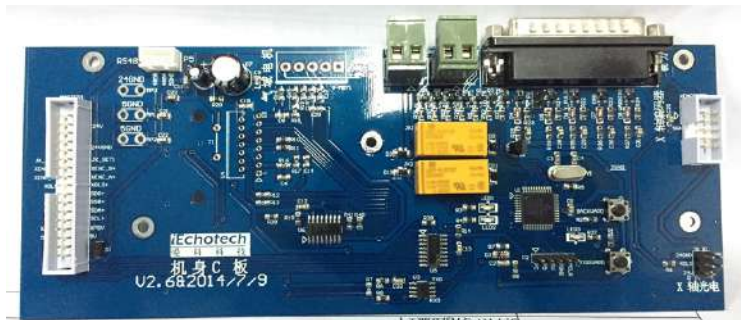


Control height motor and rotate motor in the cutting head

Control EOT, DRT/PRT, red light, pen

Control punch head

C board:

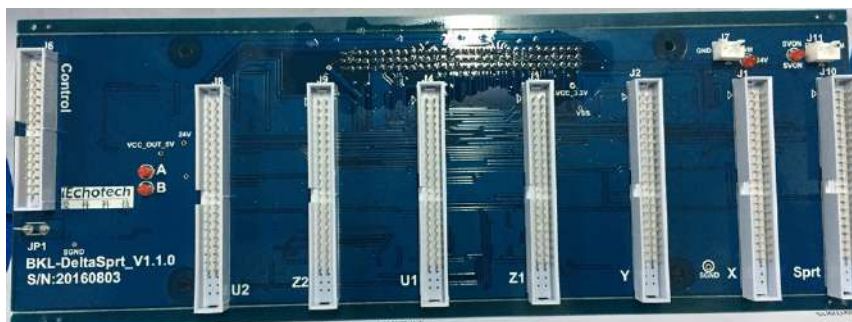


Control 350W router

X axis original point sensor

Control POT

EPOS board:

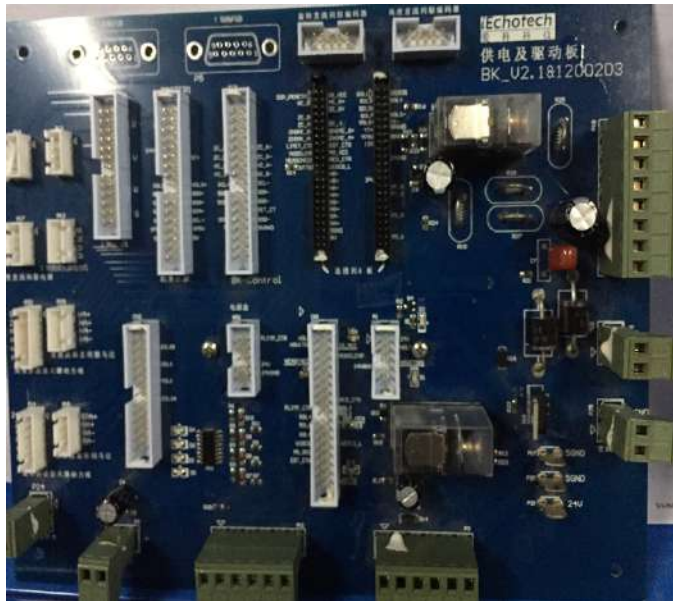


X,Y,U1,Z1,U2,Z2,U3,Z3 motor

Router function

C board commutation

Power board:



Pump

Reversing valve function

The signal of the origin sensor in X/Y direction

The signal of the ZHome A/B (Cutting head rotate reset)

AKI function

DSP board:



Cutting head reset (Reset sequence: head 2→head3→head1)

Cut in the right procedure

Pause

Back to original point

Pump

Automatic feeding

Electromagnetic valve

AKI function

Cutting tool

Pen

Vacuum

485/GPRS communication board:



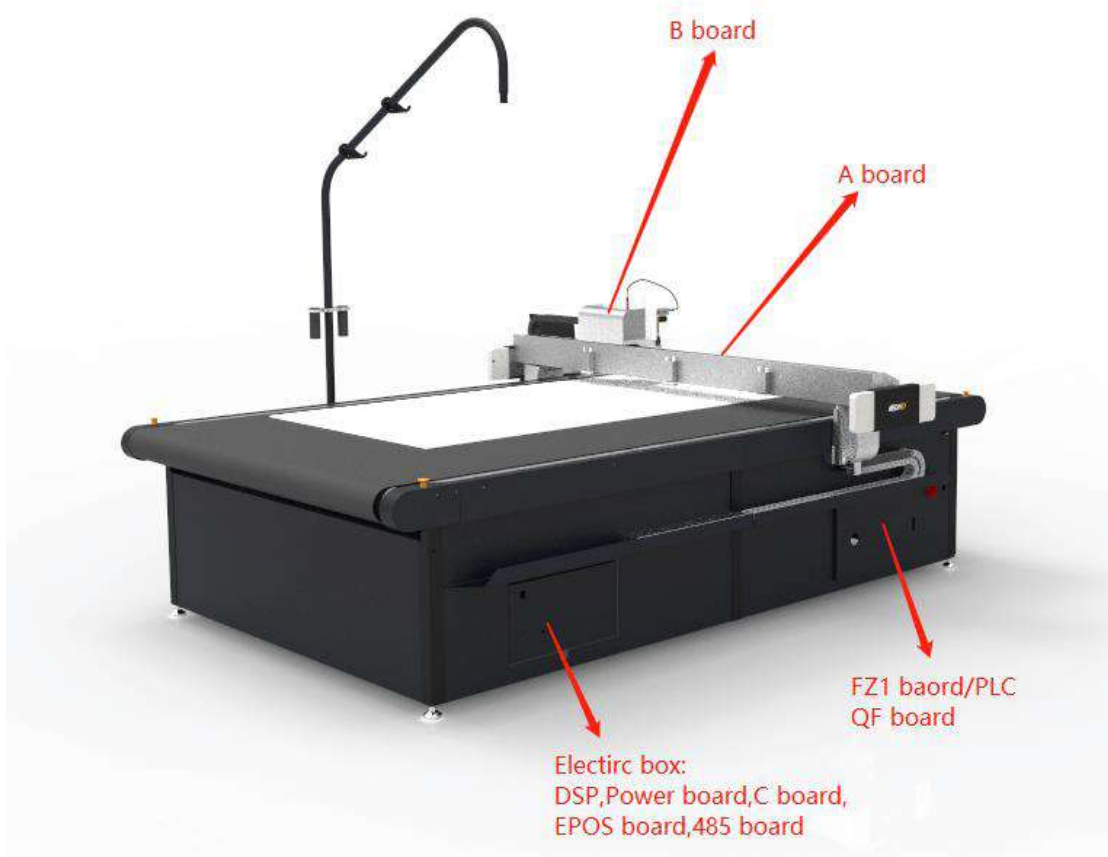
Old



New

Communication between PC and machine

BK3:



A board:



X, Y axis original sensor

Electromagnetic valve for press material

Barrier alarm

B board:



Control height motor and rotate motor in the cutting head

Control EOT, DRT/PRT, red light, pen

Control punch head

The signal of the ZHome A/B (Cutting head rotate reset)

The signal of select cutting head

Punch head

Control EOT and DRT/PRT

C board:



Control 350W router

Control POT

SPI communication

485 communication

EPOS board:



X, Y, U1, Z1, U2, Z2, U3, Z3 motor

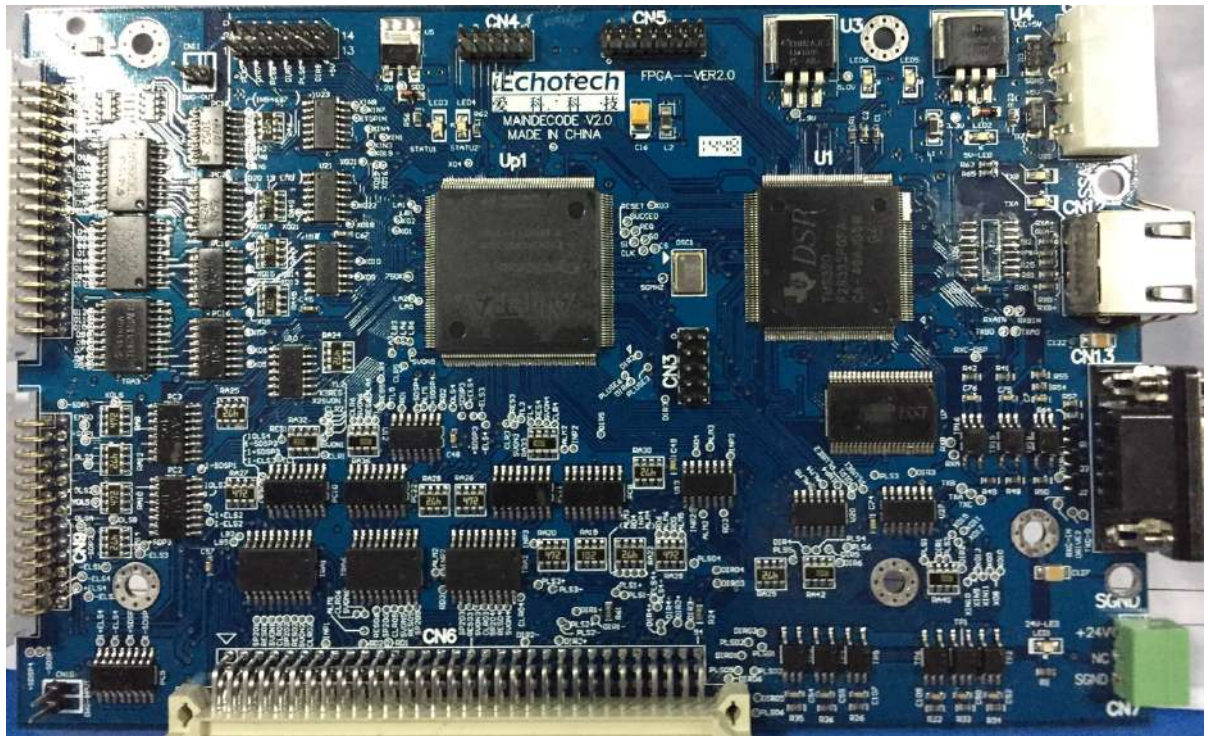
Signal of cutting head select

AKI board:



AKI function

DSP board:



Cutting head reset (Reset sequence: head 2→head3→head1)

Cut in the right procedure

Pause

Back to original point

Pump

Automatic feeding

Electromagnetic valve

AKI function

Cutting tool

Pen

Vacuum

Power board:



Pump

Reversing valve function

X, Y axis original sensor

The signal of the ZHome A/B

AKI function

Pause

Emergency stop

24V time-delay relay

The signal of Zhome A/B original point

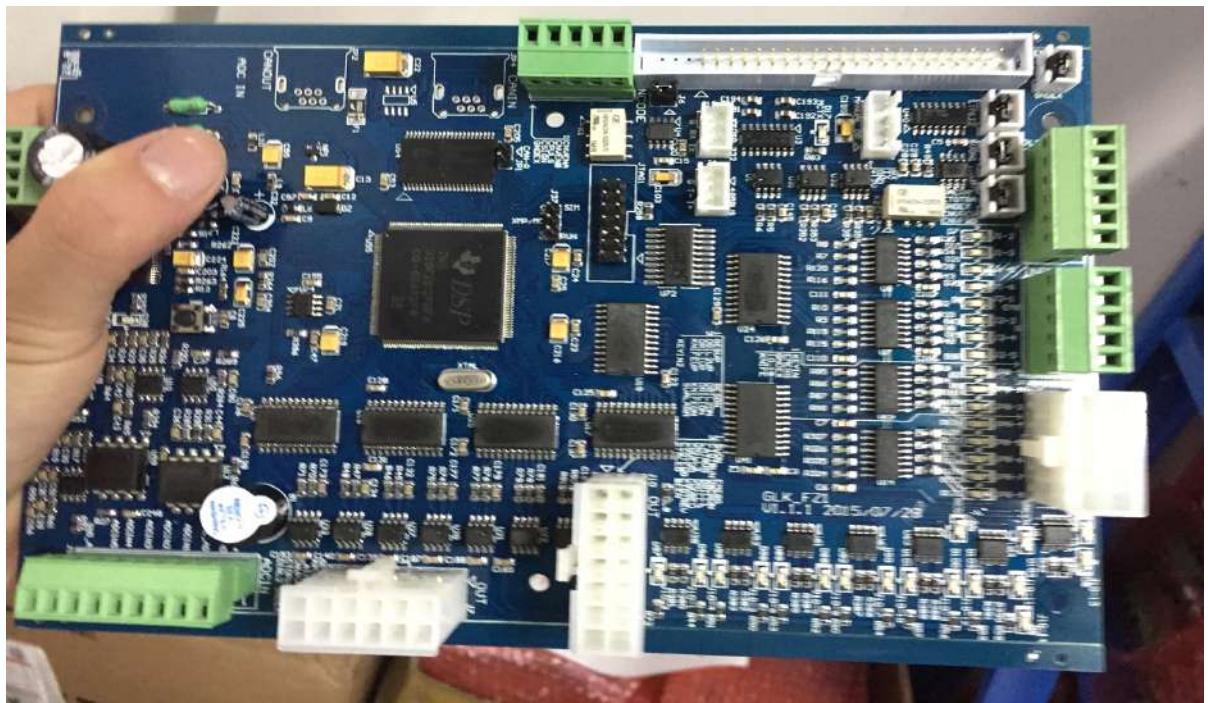
DC power input

QF board:



Control electromagnetic valve for Vacuum area select

FZ1 board:



Vacuum area selects

Vacuum power

485/GPRS communication board:



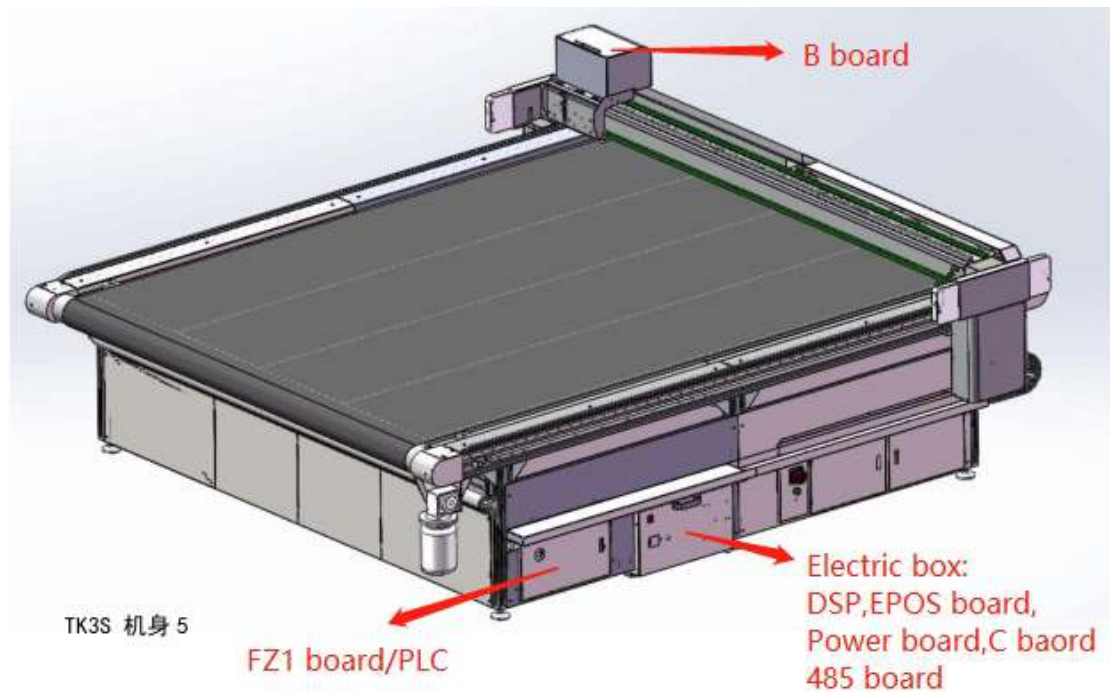
Old



New

Communication between PC and machine

TK3S



B board:



Control height motor and rotate motor in the cutting head

Control EOT, DRT/PRT, red light, pen

Control punch head

The signal of the ZHome A/B

The signal of select cutting head

Punch head

Control EOT and DRT/PRT

C board:



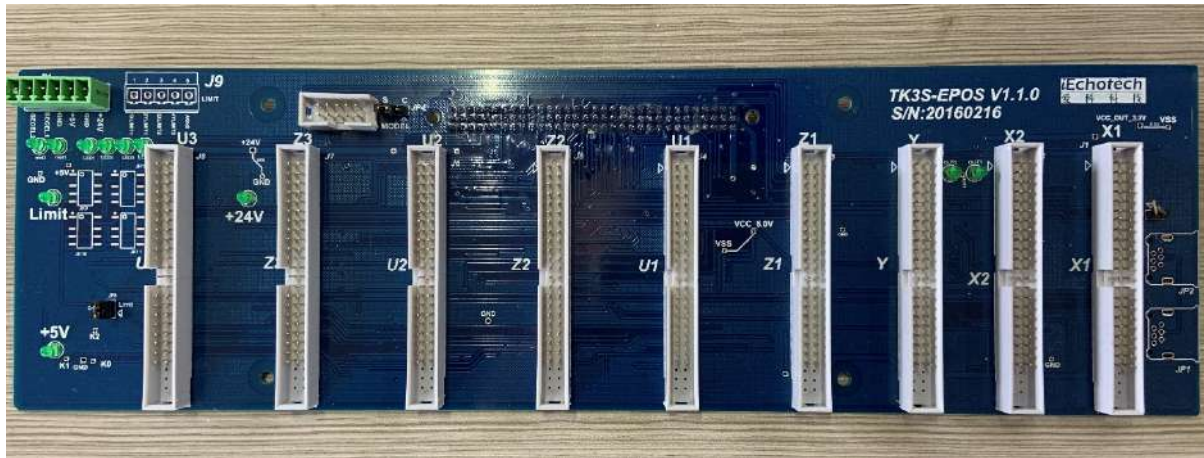
Control router

Control POT

SPI communication

485 communication

EPOS board:



X1,X2,Y,U1,Z1,U2,Z2,U3,Z3 motor

Signal of cutting head select

Power board:



Pump

Reversing valve function

The signal of the origin sensor in X/Y direction

The signal of the ZHome A/B

AKI function

Pause

Emergency stop

24V time-delay relay

The signal of X1,X2,Y ,Zhome A/B original point

DC power input

DSP board:



Cutting head reset (Reset sequence: head 2→head3→head1)

Cut in the right procedure

Pause

Back to original point

Pump

Automatic feeding

Electromagnetic valve

AKI function

Cutting tool

Pen

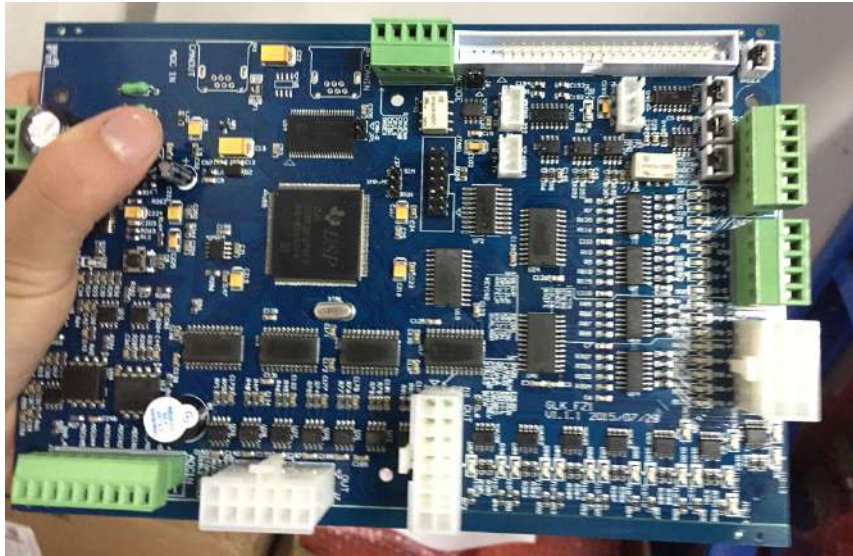
Vacuum

QF board:



Control electromagnetic valve for Vacuum area select

FZ1 board:



Vacuum area select

Vacuum power

485/GPRS communication board:



Old



New

Communication between PC and machine