

E3000 MILLING WARNING CODE

1、Warning code

Warning code	Wrong operation	Fault
A0	Motor connection	Motor connector or cable is not connected or damaged
A1	Low air pressure	When the motor rotates, the air pressure is low
A2	Controller overheating	Controller overheating
A3	Overload	Motor torque load exceeds safety limits
A4	Emergency stop signal	The emergency stop signal is disconnected in the emergency stop mode.
A5	High air pressure	Air pressure is too high

2、Warning code

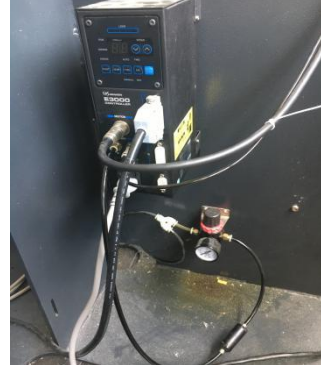
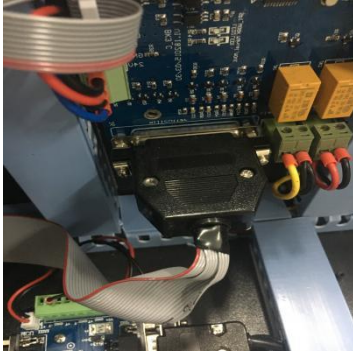
Warning code	Problem area	Fault
E1	Over current	Motor current exceeds the safety limit
E2	Overvoltage	Motor voltage exceeds the safety limit
E3	Motor sensor fault	Motor connector or connection cable is not connected.
E4	Controller overheating	Controller overheating
E5	Circuit fault	Brake circuit fault
E6	Rotor lock	Motor stalled for more than 3 seconds
E7	Low air pressure	When the motor begins to command an inadequate supply of air pressure for 4 seconds or the supply of air pressure is insufficient
E8	Torque overload	Torque over limit run time is too long (refer to E3000 operating manual 14 - 4 torque overload)
E9	Communication interrupt	Interception communications and selector, can only use the current controller to connect to the selector,
EA	External control signal error	In automatic control mode, the control command Emergency stop errorsignal is switched off before the main power switch is switched on. In automatic control mode, the error command is to stop the control signal from being re released outside the control command signal,
EL	Motor does not match	One can not match the motor
EH	overspeed	Rotation speed exceeds motor characteristics
EE	Emergency stop error	Emergency stop signal is activated or when the emergency stop is stopped by the emergency stop signal
EC	Memory error	EEPROM error

EA Error solution ways :

1. Please first switch on router and then switch on machine to test.

Electric box

2. According to the following photos, check communication cable.



3. Exchange C board to test please.

E3 Error solution ways : Make sure the control cable is tighten with router tool.



4. E7 : Low air pressure.