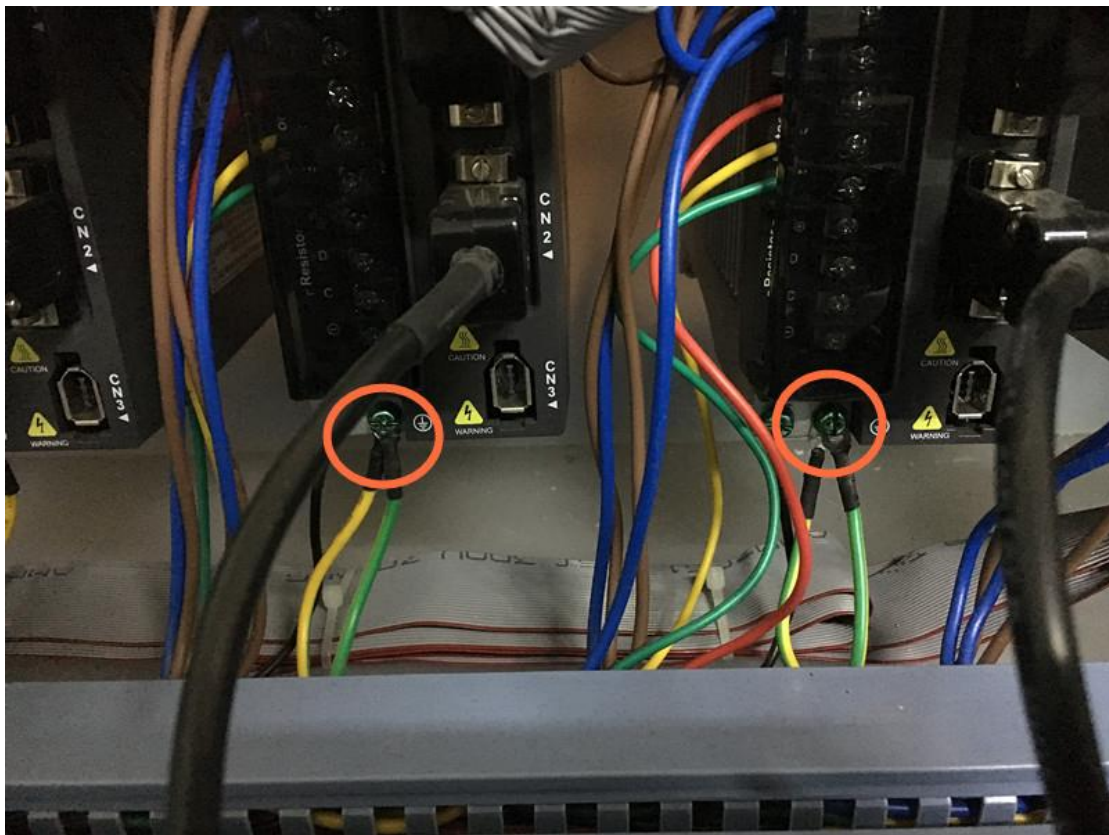


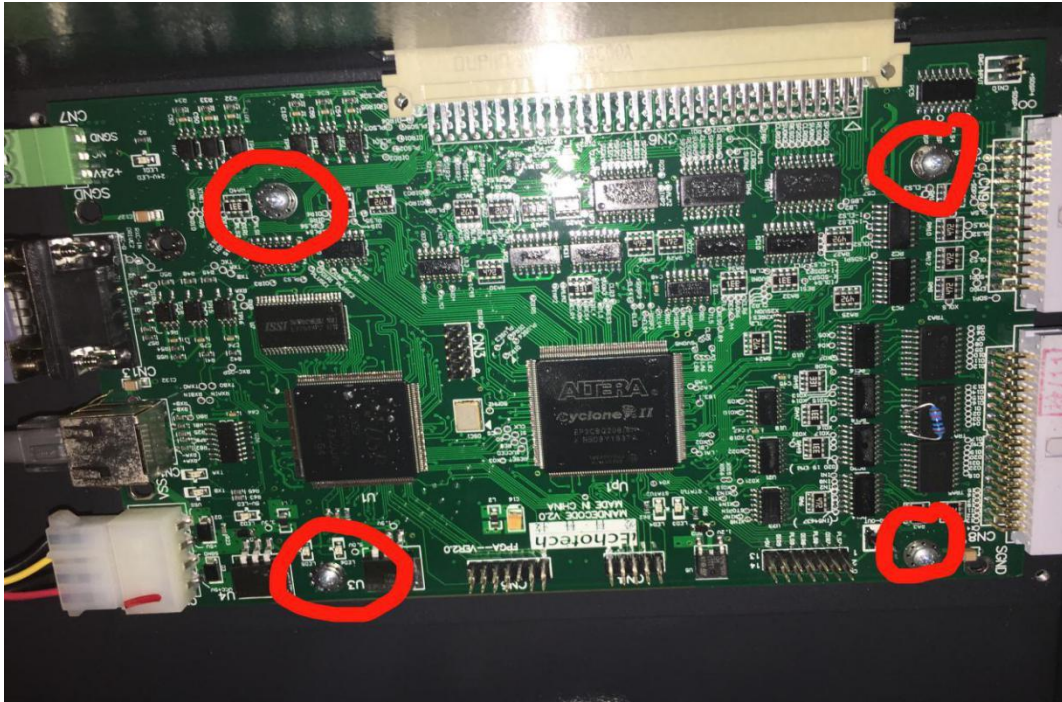
Cutting head with slow rotation automatically

1. Exchange the problematic one with a new head, if the problem on the same head , it means the head is broken.
2. Check the ground wire on the motor driver



- Connect a cable from driver GND to COM2 connector on 5/12V power supply(in the electricity box, there are three power supplies, 5/12V is the middle one)
3. Check the GND wire in the 220V power supply from your factory.

4. Remove the clamping screws of the DSP board.



5. Remove the DSP board, find C126,C127,C128, and remove them.

