

HIGH POWER ROUTER MODULE

■ High-efficiency router application

The routing module is equipped with high-frequency spindle, which can be used to cut hard and soft foam materials. The cutting thickness could be up to 50mm. It can maximize the output of materials and meet the demands of 24 hours/ 7 days harsh production environment, which is highly superior to traditional cutting equipments.

■ Excellent performance

Equipped with 1.8KW spindle, the rotation could be up to 60000rpm, which allows higher processing speed and smoother finishing.

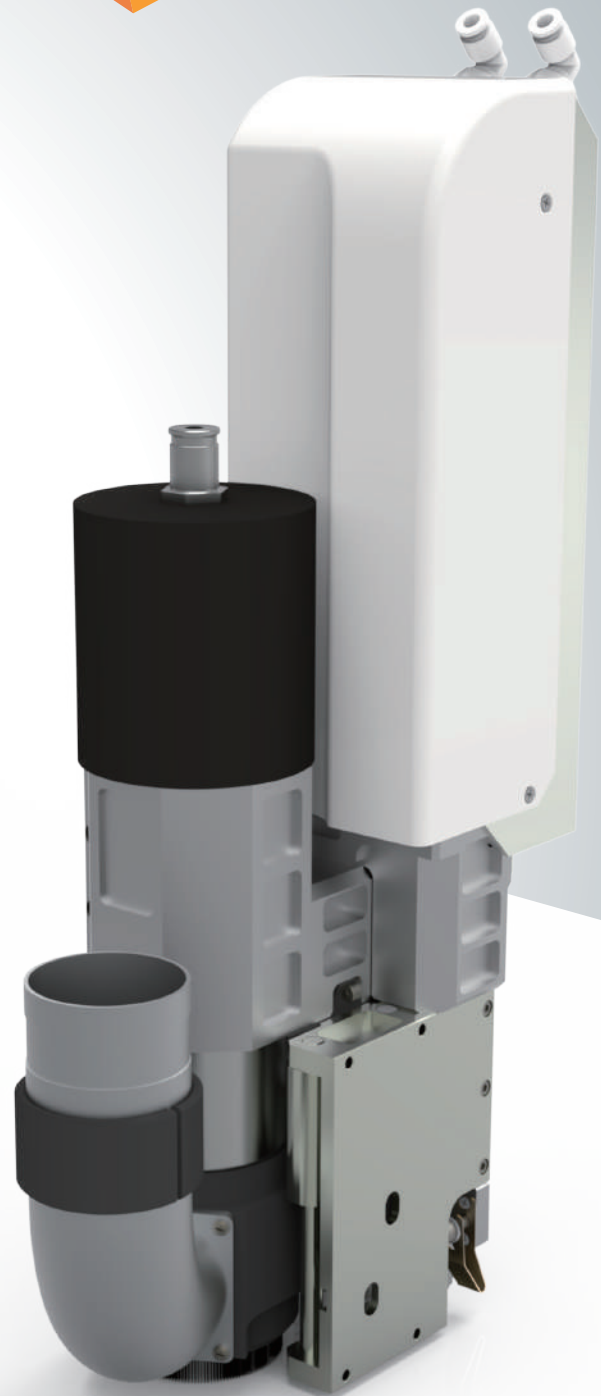
■ Dust removal device

The dust removal system minimizes the chips during processing.

■ Various processes can be completed with only one module, including engraving, milling, lettering, polishing, chamfering , etc.

■ Applicable for blades with shank dia of 4mm, 6mm and 8mm.

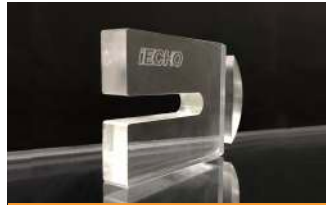
■ Compatible with BK/ BK2/ BK3/TK3S model



Materials



MDF



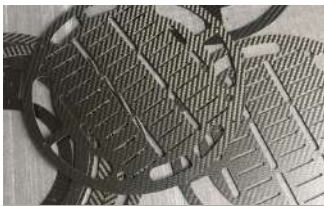
Acrylic



EVA



Aluminum Honeycomb Board



Carbon Fiber Board



ABS



Aluminum Composite Panel



Foam board

Features

The maximum processing depth could be **50mm**

Automatic brush height detection function

- The brush on the routing module is motor-controlled, which can automatically detect material thickness.



Fully automatic knife library

- The blades can be changed easily without manual operation. Up to 9 different blades can be equipped (TK3S Only).



AKI system

- The depth of cutting tool can be controlled accurately by the automatic knife initialization system.



Automatic blade cleaning device

- Equipped with automatic blade cleaning device, it will clean blades before changing, which ensures the knife library clean (TK3S Only).



Pneumatic clamp, one step to complete blade change

- The efficiency of automatic blade changer is 10 times of manual operation.
- The blade changing can be completed without disassembling the routing module.
- Safe, fast and easy to operate.

